

KUMEU ARTS - 5-20 MARCH 2024

LIZ SMITH - WITH TANYA BLONG, MIKE DAVISON, MANDY JAKICH, CATRINA LLOYD, JEFF THOMSON

I feel very privileged that this group of talented artists agreed to be in this exhibition with me. Being entrusted with the task of translating their works into another medium, hand tufting and embroidery, has filled me with a profound sense of responsibility and gratitude. It's not merely about replicating their creations; it's about capturing the essence of their art, and reimagining it through a different lens. That these artists have placed their trust in me to interpret their work is a huge honour on my part - and a leap of faith on theirs. It's a testament to the power of creative exchange and their willingness to take risks in pursuit of innovation and expression. *Liz Smith*

MIKE DAVISON

Untitled. From the show 'The space between'
 Paint and varnish on ply. Rimu frame
 1200mm x 800mm
 \$7000



Mike is an artist trapped in an advertising man's body. He's been juggling both most of his career.
 Now a Muriwai resident, this painting is from his 2022 show 'the space between', reflecting on the ever shifting, magnetic and electric voids between people.

LIZ SMITH

From Mike Davison's show
 'The space between' - Tufted.
 Hand tufted wall hanging or rug
 Acrylic and wool yarn
 1200 mm x 1800 mm
 \$2500



"When I first saw this painting of Mike's I was blown away. Many, many layers of varnish are laid over deep, rich colours - I felt like I wanted to sink into this golden sea and float away. The way the hues blend and merge, yet remain distinct, is a testament to Mike's mastery of his craft. I have thoroughly enjoyed "interpreting" this piece by using sharp, crisp lines between the colours to provide a sense of harmony, a balance of chaos and serenity."

JEFF THOMSON

Mahoe Leaf
 Screen-printed steel
 2200mm h x 700mm wide x 200mm d
 \$6,300



"If you counted the number of life-sized cows Jeff has made, they would now add up to quite a herd. There are also countless sheep, penguins, ostriches, dogs and butterflies. An elephant he made for Auckland Zoo has towered over one of the entrances for nearly 20 years.

Jeff's sculptures can be found all over New Zealand. If you're driving through the town of Taihape, you'll see a gigantic iron gumboot he made. One of his most famous constructions is a corrugated iron Holden station wagon.

Corrugated iron is Jeff Thomson's life; he can make it dance and sing and tell us things. His sculptures say a lot about New Zealand and the world beyond. It's a funny, interesting place and you can do anything if you put your mind - and your imagination - to it." Gregory O'Brien

LIZ SMITH

Piwakawaka
Cotton thread on mahoe skeleton leaf
230mm x 280mm
\$495

Tui
Cotton thread on mahoe skeleton leaf
230mm x 280mm
\$495

Ruru
Cotton thread on mahoe skeleton leaf
230mm x 280mm
\$495

Tieke
Cotton thread on linen
230mm x 280mm
\$495

Following Cyclone Gabrielle, the forest trails at Muriwai lay ravaged, with the once vibrant bird population vanishing for an extended period. However when I look at Jeff's enormous mahoe skeleton leaf sculpture it symbolises to me a resurgence of the ecosystem. Remarkably, the birdlife has returned, indicating the beginning of regrowth and hope after the devastation.



CATRINA LLOYD

The Dry Sea
Acrylic and Ink
1200mm x 1200mm
\$1950.00



"I have had a growing obsession with iron sand for quite some time now. This work is part of a series called 'The Dry Sea'

I am always observing the ever-changing nature of iron sand and have come to see that it moves much like the ocean. With deep dense layers of sand, spattered with streaks of electric indigo and dusted with sweeps of caramel. When I walk along the beach it's like the two seas meet, overlapping their watermarks and sand lines that change over the course of the changing tides

I think it is the impermanent nature of the sand and the sea that I am so drawn to. It invigorates me and allows me to move through the inner parts of myself, helping anything that's stuck to become unstuck. No wonder I feel somewhat transformed after being out in this environment. The more time we can spend in it, I believe the more too we can move."

LIZ SMITH

The Dry Sea - Tufted
100% NZ wool hand tufted
Wall hanging or rug
2800mm x 1800mm
\$4290



"Catrina's words about the sand and sea touched a cord with me. When you walk along Muriwai Beach you do see that the sand is not fully "black" - she is absolutely right when she says it's "spattered with streaks of electric indigo and dusted with sweeps of caramel." I wanted to make a really large work to exaggerate these sweeps of colour and create an immersive experience.

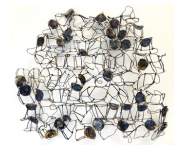
This work is made from 100% New Zealand yarn which, ironically, is imported back into the country at great expense after having been exported to India for dying and spinning."

JEFF THOMSON

Kete 1
Used Corrugated iron
400mm x 370mm
\$2,900

Kete 2
Biscuit, cake, paint and olive oil tins
400mm x 370mm
\$2,900

Champagne wires
Used champagne wires
380mm x 400mm
NFS



LIZ SMITH

Kete - Tufted
Acrylic yarn, cotton fabric, artboard, leather handles
\$450

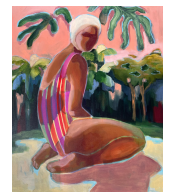
Champagne
Embroidery thread on linen
610mm x 610mm
\$850



“Jeff’s creativity and skill with wire, iron, paper clips and other random left over bits and bobs knows no bounds. Artist, sculptor, maker, corrugated iron wrangler - it seems like there isn’t anything Jeff can’t turn his hand to. These pieces were my biggest challenge - how do I interpret champagne corks? A corrugated kete? Many sleepless nights were had! After a lot of experimentation, the results are “soft” works creating a contrast with the inherent rigidity of Jeff’s materials - gentle contours intertwining with sturdy forms, simple colours against a kete made from cut up biscuit tins.”

TANYA BLONG

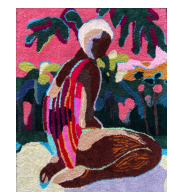
Black Smoke Creek
Acrylic on canvas
850mm x 700mm
\$2400



“I am interested in society at leisure and the act of being idle, it’s not only the sensory aspect of this state of being but looking at leisure throughout history and what it looks like for people today. The luxury of time being a major theme with questions posed of access, privilege and exclusion.”

LIZ SMITH

Black Smoke Creek - Tufted
Hand tufting - acrylic yarn
900mm x 730mm
\$1250



“I am big fan of Tanya’s work - I have three of her pieces at home and I have attended her colour workshop. She has a depth and wealth of knowledge of art and its history. I especially love her skilful layering of colour upon colour creating depth and dimension, inviting the viewer to immerse themselves in a world where every shade tells a story, and every brushstroke whispers secrets of beauty and wonder.”

MANDY JAKICH

Muriwai Sand Lines
Acrylic on board
860mm x 600mm
\$850



Untitled 1, 2 and 3
Acrylic and Muriwai sand on plywood
200mm x 200mm
\$150 each



Muriwai Sand Lines Lightbox
Acrylic sheet, plywood, ED lights, plug and remote.
860mm x 600mm
\$950



“The patterns and lines in these paintings and the light box are taken from photographs I have taken of the lines made by the wind in the sand dunes at Muriwai Beach. A gentle nod to mid century design, connecting design with place using black sand collected from Muriwai Beach.”

LIZ SMITH

Muriwai Sand Lines - Tufted
Acrylic yarn hand tufted
880mm x 640mm
\$850



Untitled 1, 2 and 3 - Tufted
Acrylic yarn hand tufted
230mm x 230mm
\$150 each



Muriwai Sand Lines (Lightbox) - Tufted
Acrylic yarn hand tufted
880mm x 640mm
\$850



“I love Mandy’s approach to colour and form. When I saw these works I immediately wanted to tuft a version! From the bold stripes to the simplicity of black and white Mandy has a keen eye for juxtaposing hues and shapes. I can absolutely see the wind in the sand dunes when I look at these works.”